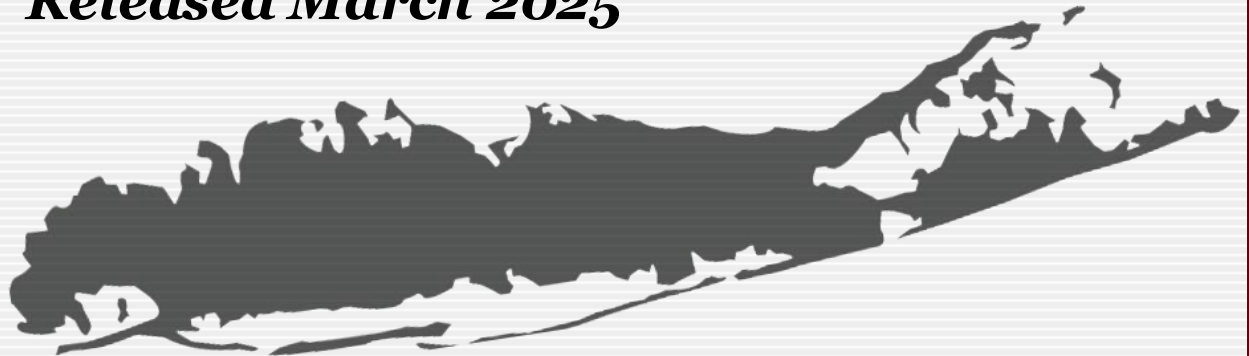


Long Island By the Numbers: *How is L.I. Doing in 2025?*

Prepared By:

**Andrew Manitt, Research Director
Sustainability Institute at Molloy University
Neal Lewis, Executive Director
Sustainability Institute Molloy University**

Released March 2025



Population and Economics

2

Nassau	1,381,715
Suffolk	1,523,170
Total	2,904,885

- Larger than 15 U.S. States

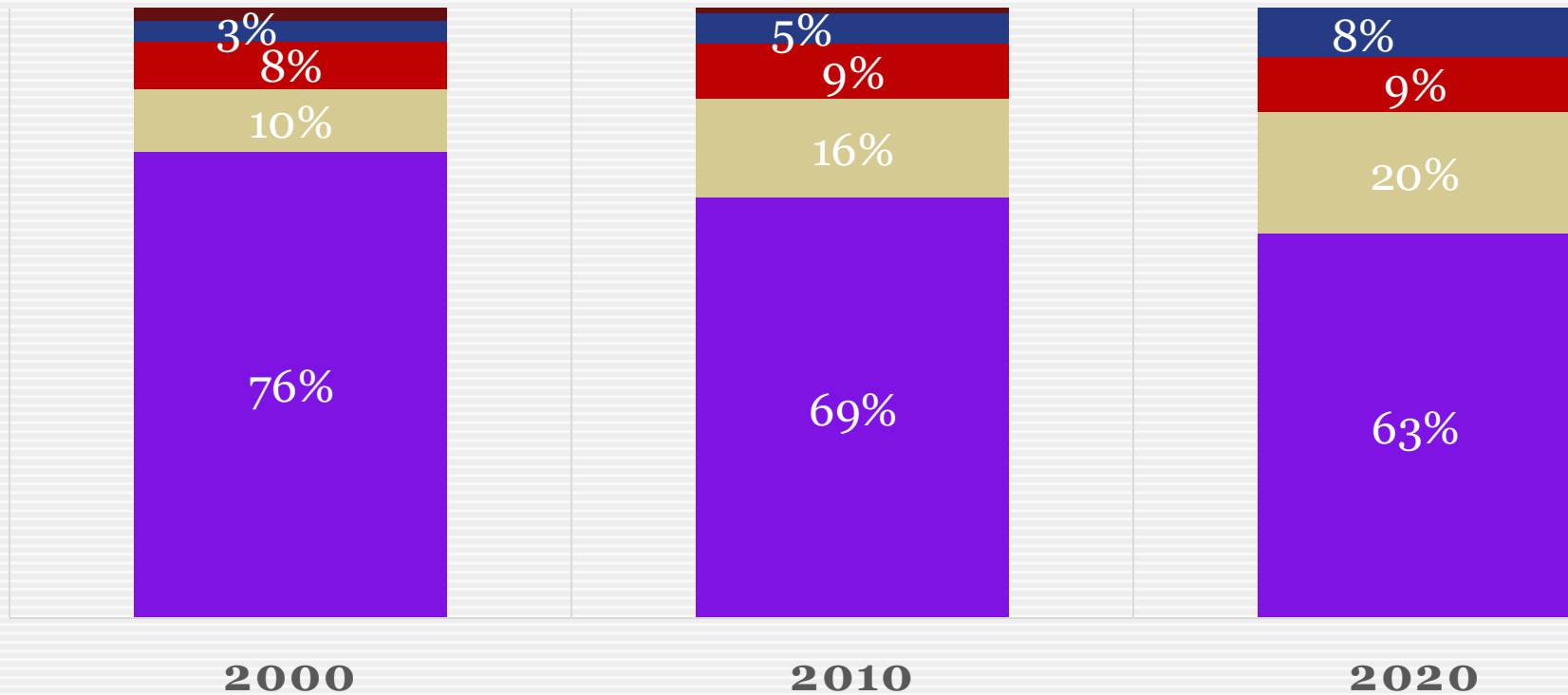
Estimated July 1, 2023
Source: census.gov



Long Island's Increasing Diversity

3

■ White, non-hispanic ■ Hispanic/Latino ■ Black, non-hispanic
■ Asian non-hispanic ■ Other non-hispanic



Source: US Census

NYS Gross Domestic Product by County

4

County	2023 GDP (in chained 2017 dollars)	Population
New York	797,092,203,000	1,597,451
Kings (Brooklyn)	110,580,419,000	2,561,225
Queens	107,263,194,000	2,252,196
Suffolk	105,751,656,000	1,523,170
Nassau	100,089,673,000	1,381,715
Westchester	90,241,804,000	990,817
Erie	62,943,074,000	946,147
Monroe	48,916,577,000	748,482
Bronx	44,029,337,000	1,356,476
Albany	35,778,797,000	316,659

Nassau/Suffolk GDP ~\$205 billion in 2023 - greater than 20 U.S. states.

Source: Bureau of Economic Analysis, U.S. Dept. of Commerce

Unemployment Rate (2024 Average)

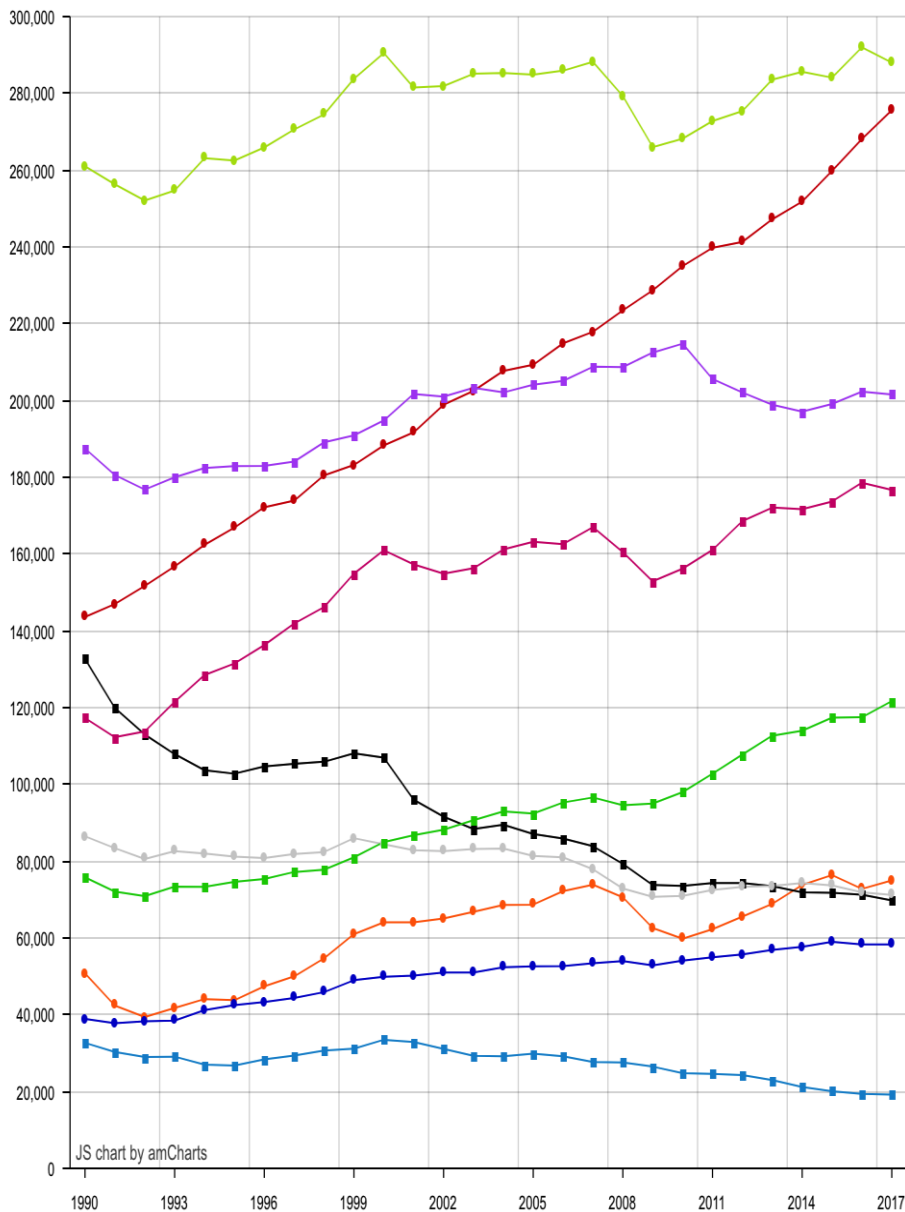
Nassau	3.2%
Suffolk	3.5%
N.Y. State	4.3%
U.S.	4.0%

*Source: U.S. Bureau of Labor Statistics
bls.com
Local Area Unemployment Statistics
(LAUS)*

Labor Force Participation Rate (2021 Average)

Nassau	65.2%
Suffolk	65.8%
N.Y. State	62.8%
U.S.	63.0%

*Source: U.S. Census
American Community Survey
www.census.gov/quickfacts*



	2017	2023
Transportation/ Trade	21%	19%
Health/Education	20%	22%
Government	15%	15%
Professional/Business	13%	13%
Hospitality	9%	10%
Construction	6%	6%
Financial	5%	5%
Manufacturing	5%	5%
Other Services	4%	4%
Information	1%	1%

Long Island's Top Employers in 2016

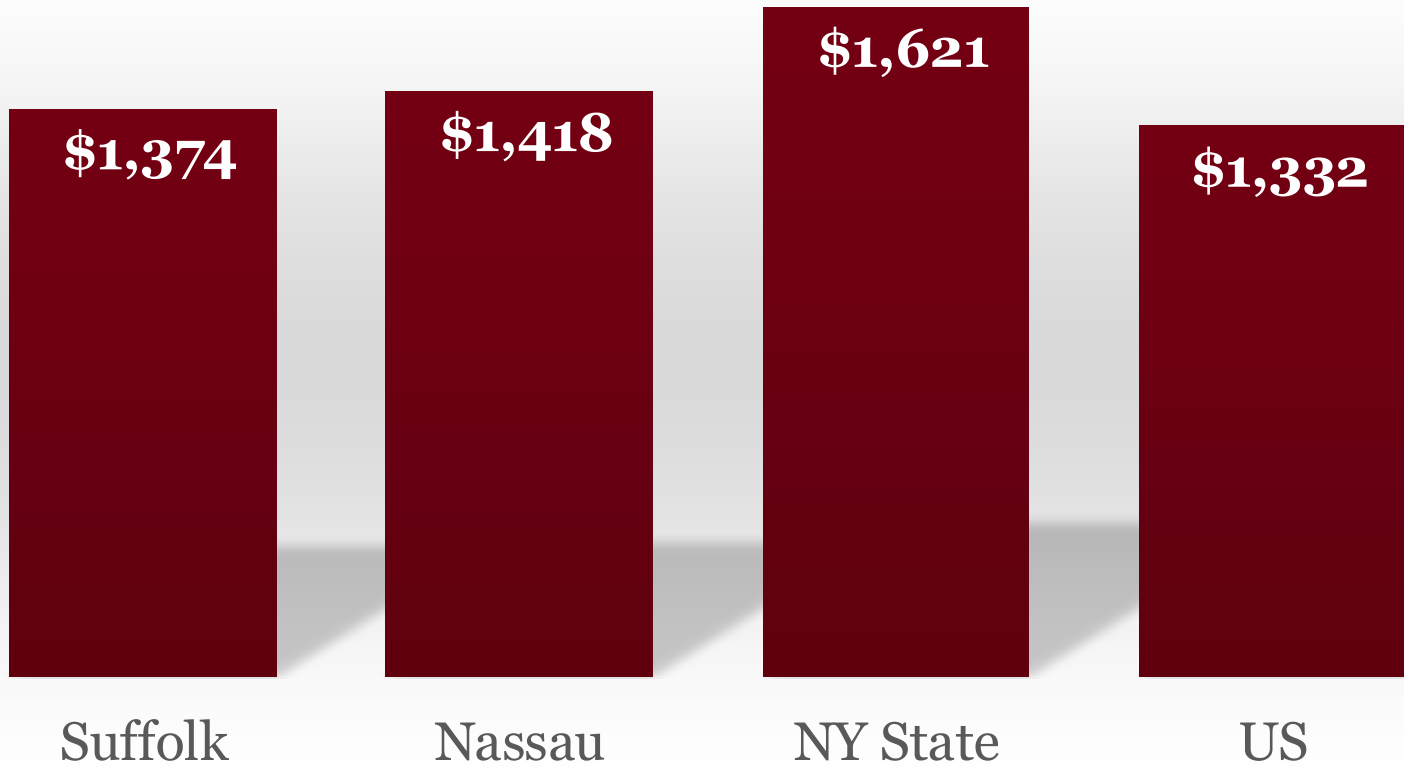
7

- 1. Northwell Health** - 31,153 (includes Queens)
- 2. New York State** - 20,304 (includes SUNY Campuses & Stony Brook Hospital)
- 3. Catholic Health Services** - 17,000
- 4. Nassau County** - 16,784 (includes Nassau University Medical Center, A. Holly Pattern Extended Care Facility and five federally qualified health care centers)
- 5. Federal Government** - 16,391 (includes 9,200 postal workers)
- 6. Suffolk County** - 11,075
- 7. Stop & Shop** - 8,100
- 8. Winthrop-University Hospital** - 7,700
- 9. Long Island Rail Road** - 6,960
- 10. Walmart** - 5,056

Source: Newsday

Average Weekly Wages — Q2 2023

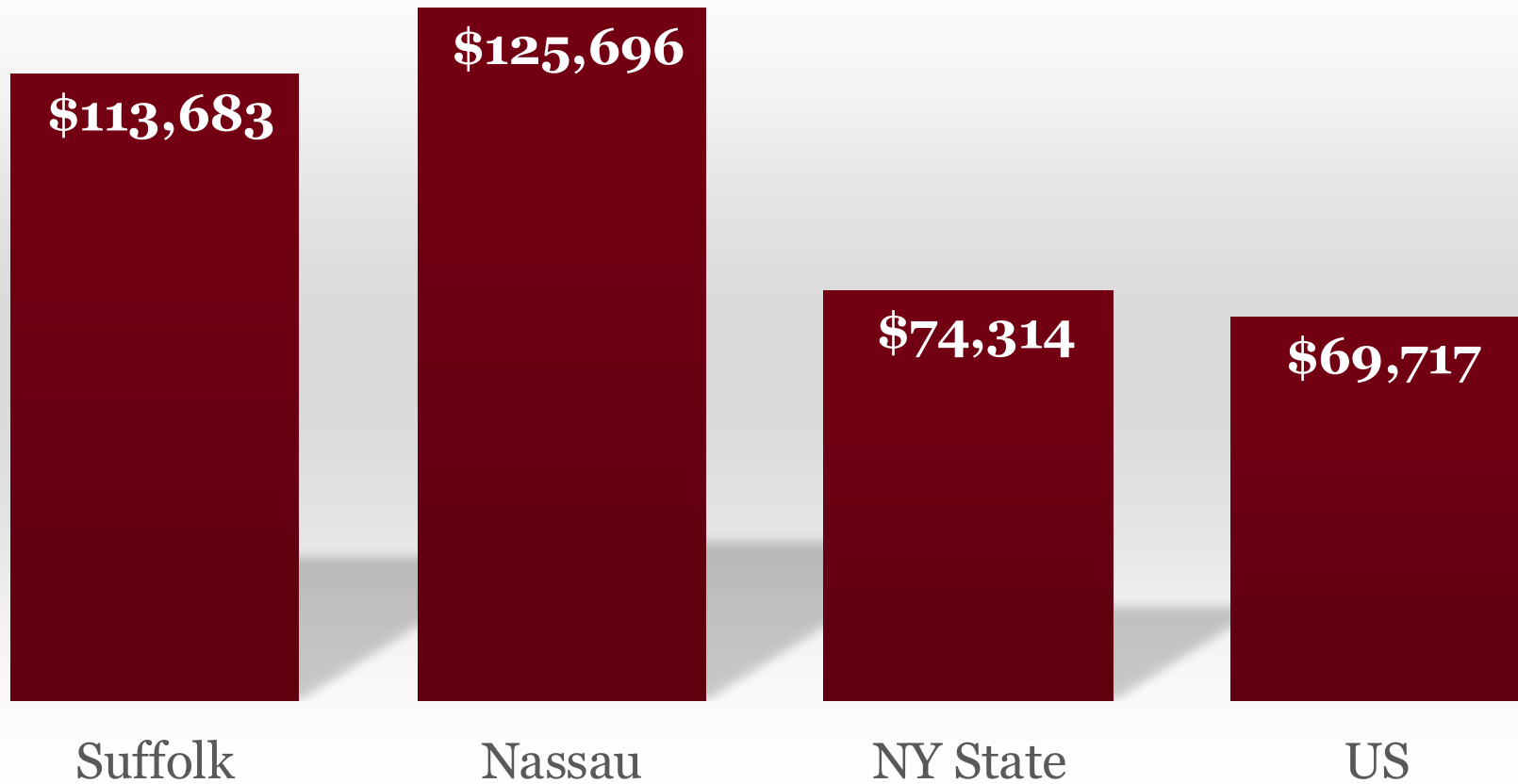
8



Source: U.S. Bureau of Labor Statistics

Median Household Income

9

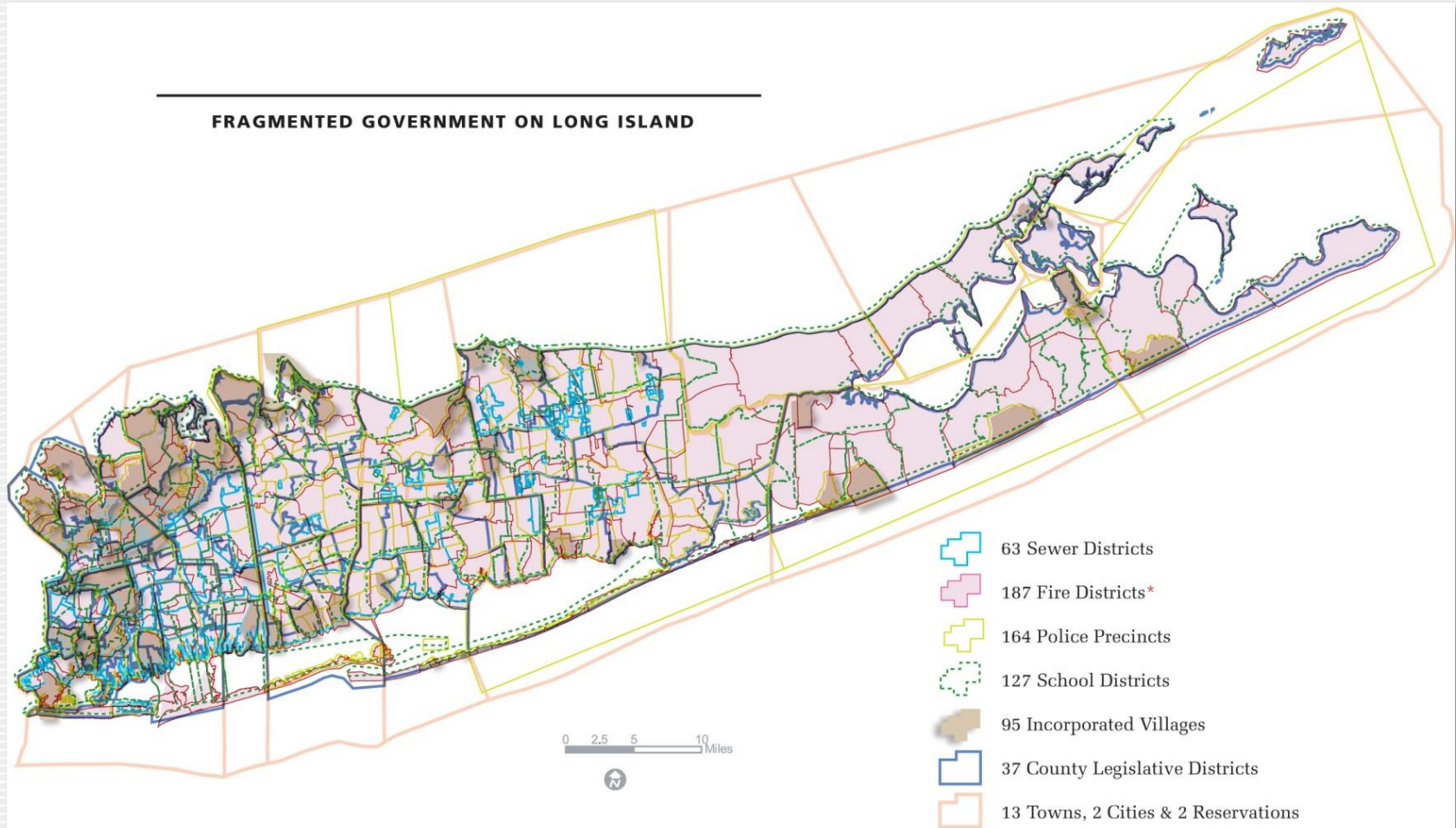


Source: U.S. Census – ACS 2021

Governance and Taxation

10

FRAGMENTED GOVERNMENT ON LONG ISLAND



Sources: U.S. Census Bureau; Nassau County Planning Commission (Basemap copyright 2003 County of Nassau, NY); Long Island Regional Planning Board; NYS Office of Real Property Services

Local Governments & Districts

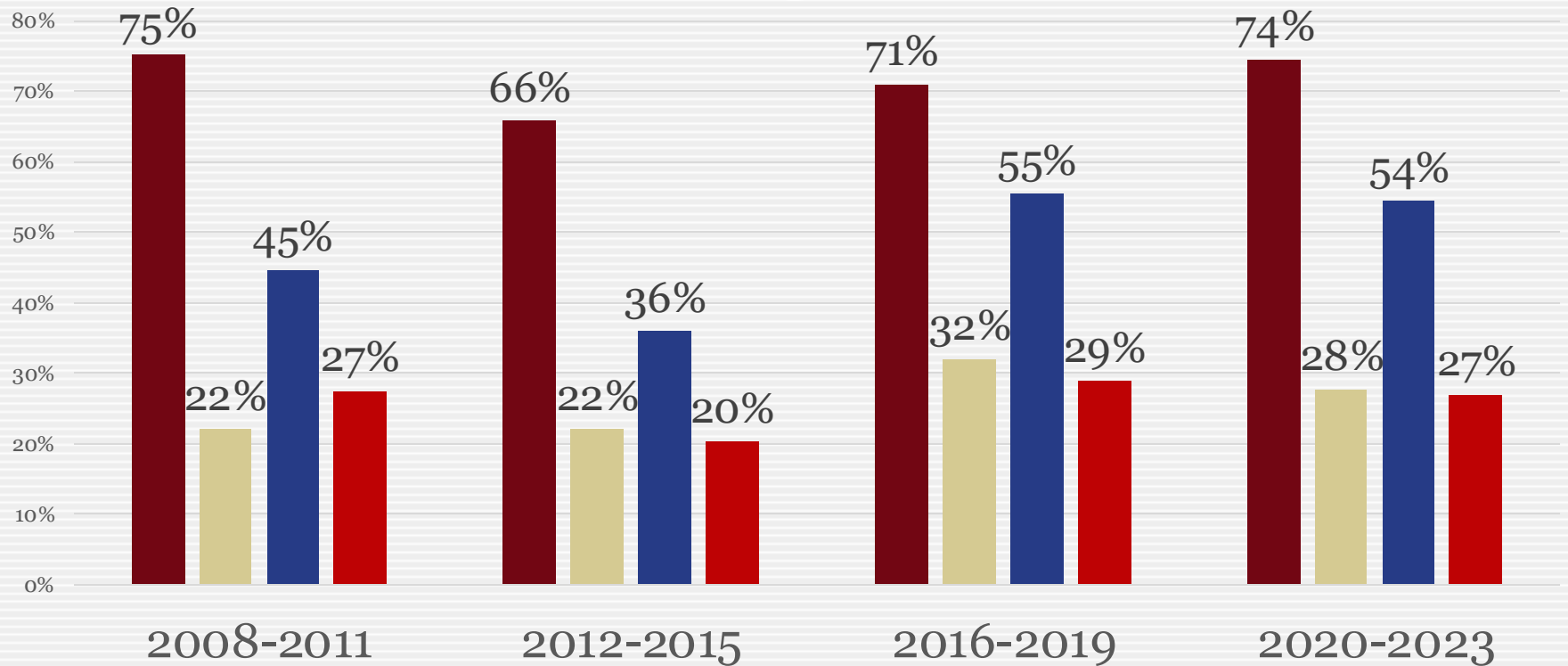
11

- 2 - Counties
- 2 - Cities
- 13 - Towns
- 96 - Villages
- 26 - Sewer Districts
- 41 - Police Districts
- 54 - Water Districts
- 83 - Garbage Districts
- 110 - Library Districts
- 125 - School Districts
- 227 - Fire Districts



Suffolk County Voter Turnout

12



■ Presidential ■ Off year - Leg ■ Mid-term ■ Off year - Exec

Percentage of registered voters.

Source: Suffolk County Board of Elections

U.S. counties with the highest average property taxes in 2018

13

1. Westchester, New York: \$17,392
2. Rockland, New York: \$12,925
3. Essex, New Jersey: \$12,161
4. Bergen, New Jersey: \$11,771
- 5. Nassau, New York: \$11,708**
6. Union, New Jersey: \$11,075
7. Fairfield, Connecticut: \$10,754
8. Morris, New Jersey: \$10,507
9. Passaic, New Jersey: \$9,988

- ~12. Suffolk, New York: \$9,598**

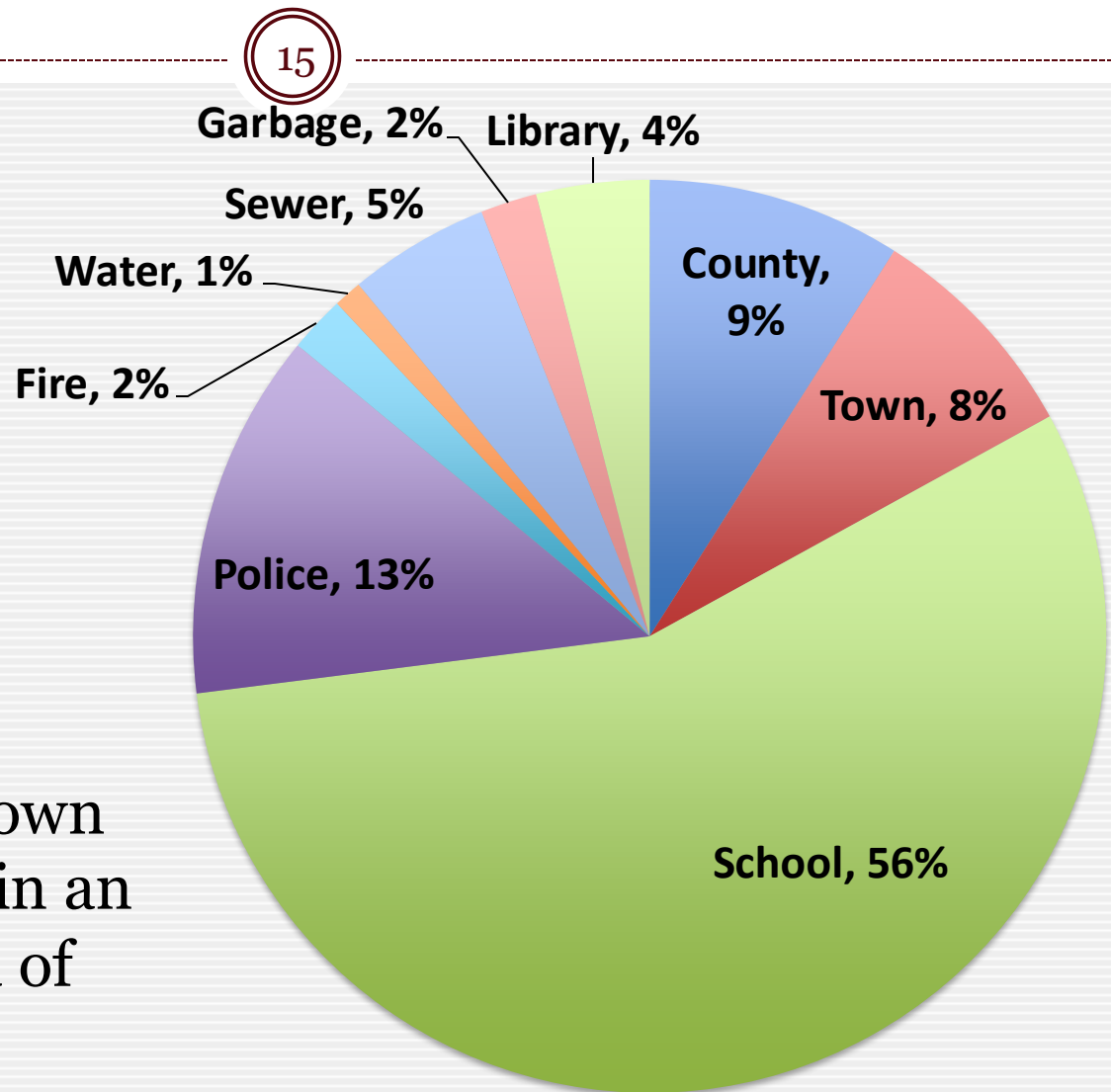
Sources: CBS News reporting on data from Attom Data Solutions & Taxfoundation.org

U.S. counties with the highest average property taxes in 2021 (5-year estimate)

14

- Bergen, New Jersey: >\$10,000
- Essex, New Jersey: >\$10,000
- Hunterdon, New Jersey : >\$10,000
- Morris, New Jersey: >\$10,000
- Passaic, New Jersey: >\$10,000
- Union, New Jersey: >\$10,000
- **Nassau, New York: >\$10,000**
- New York, New York: >\$10,000
- Rockland, New York: >\$10,000
- Westchester, New York: >\$10,000
- Falls Church (city), VA: >\$10,000
- **~12. Suffolk, New York: \$9,911**

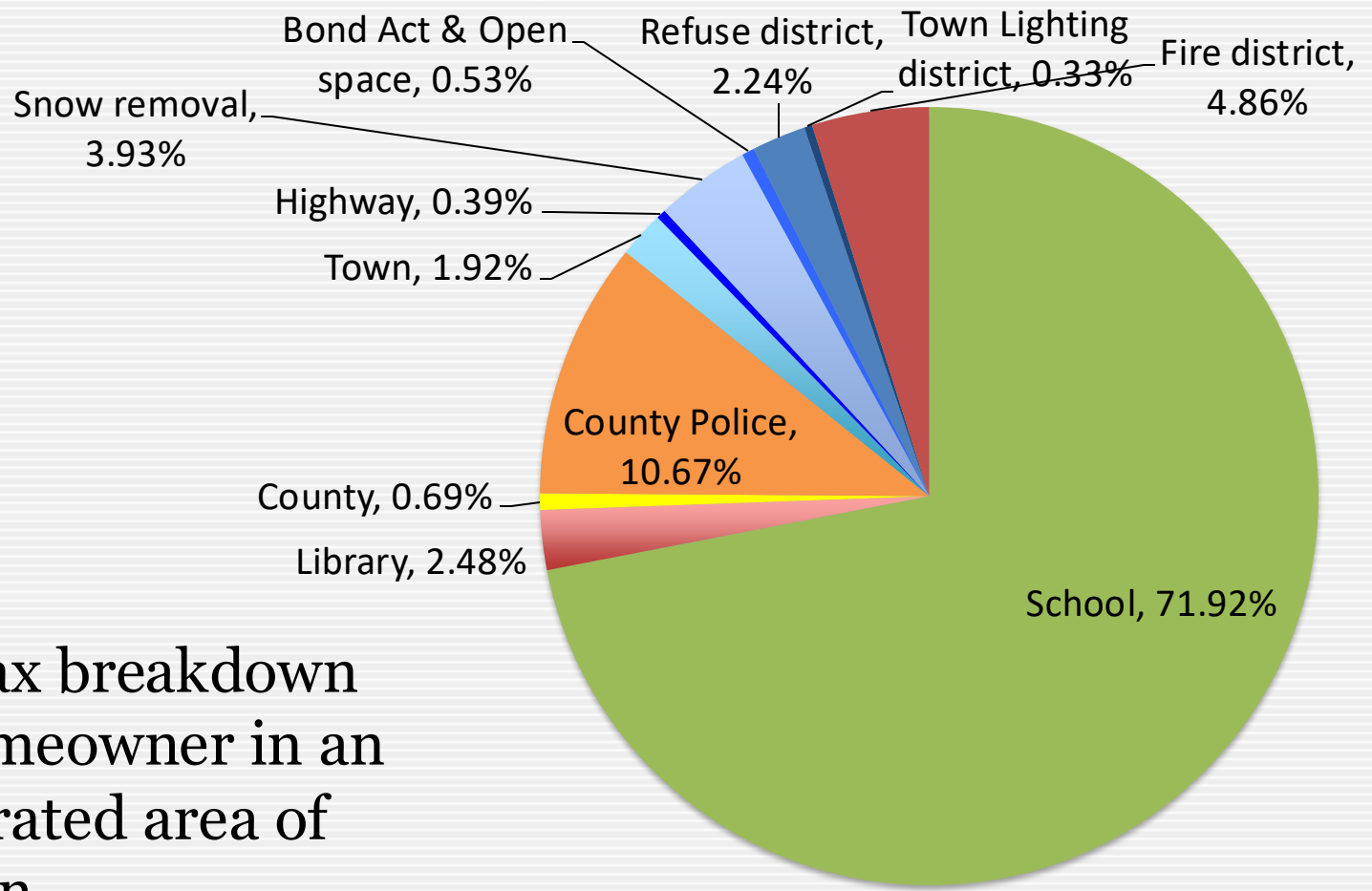
Division of Property Taxes



Property tax breakdown
for one homeowner in an
unincorporated area of
North Hempstead

Division of Property Taxes

16

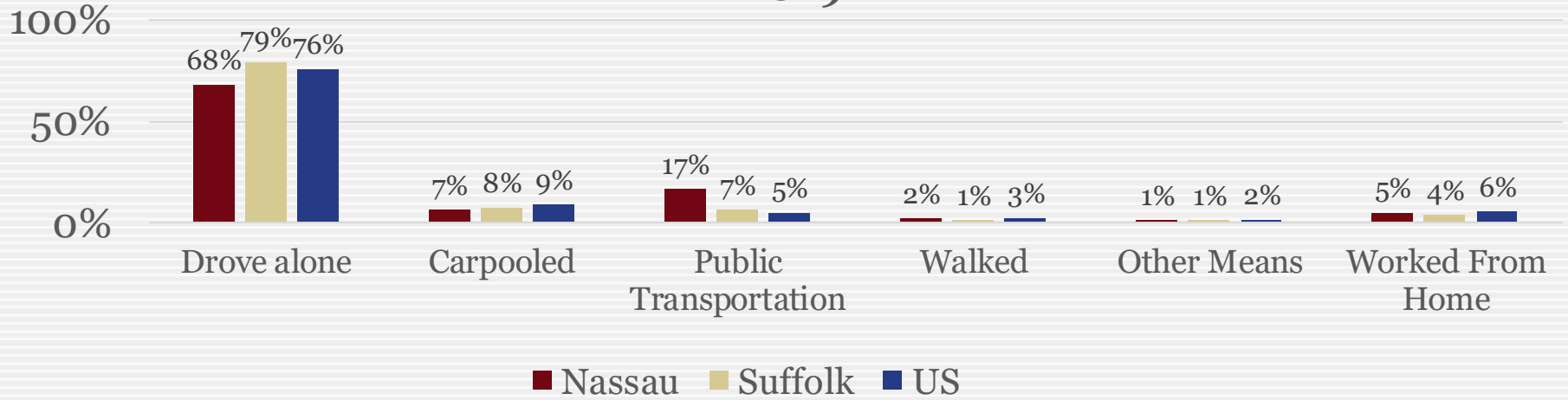


Property tax breakdown
for one homeowner in an
unincorporated area of
Brookhaven

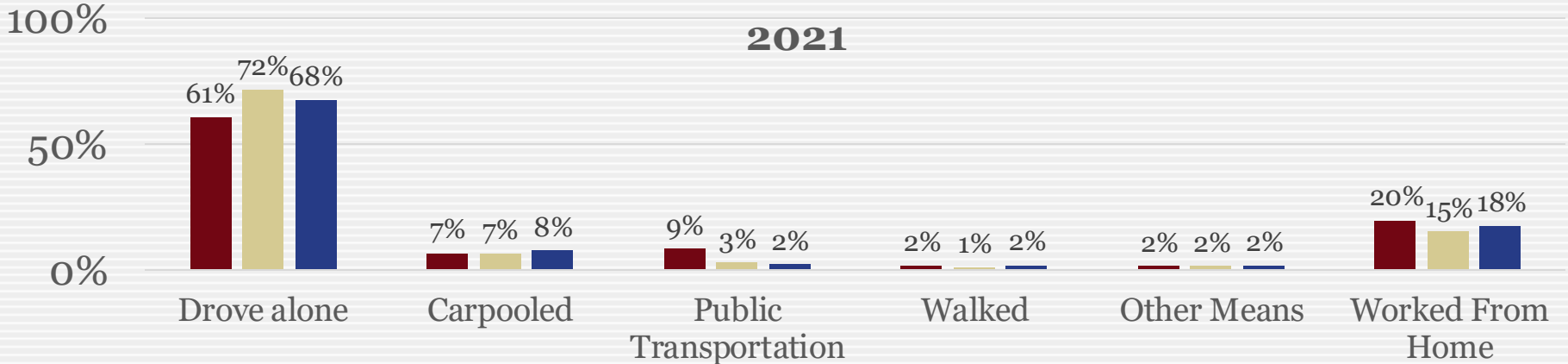
Transportation How We Get to Work

17

2019



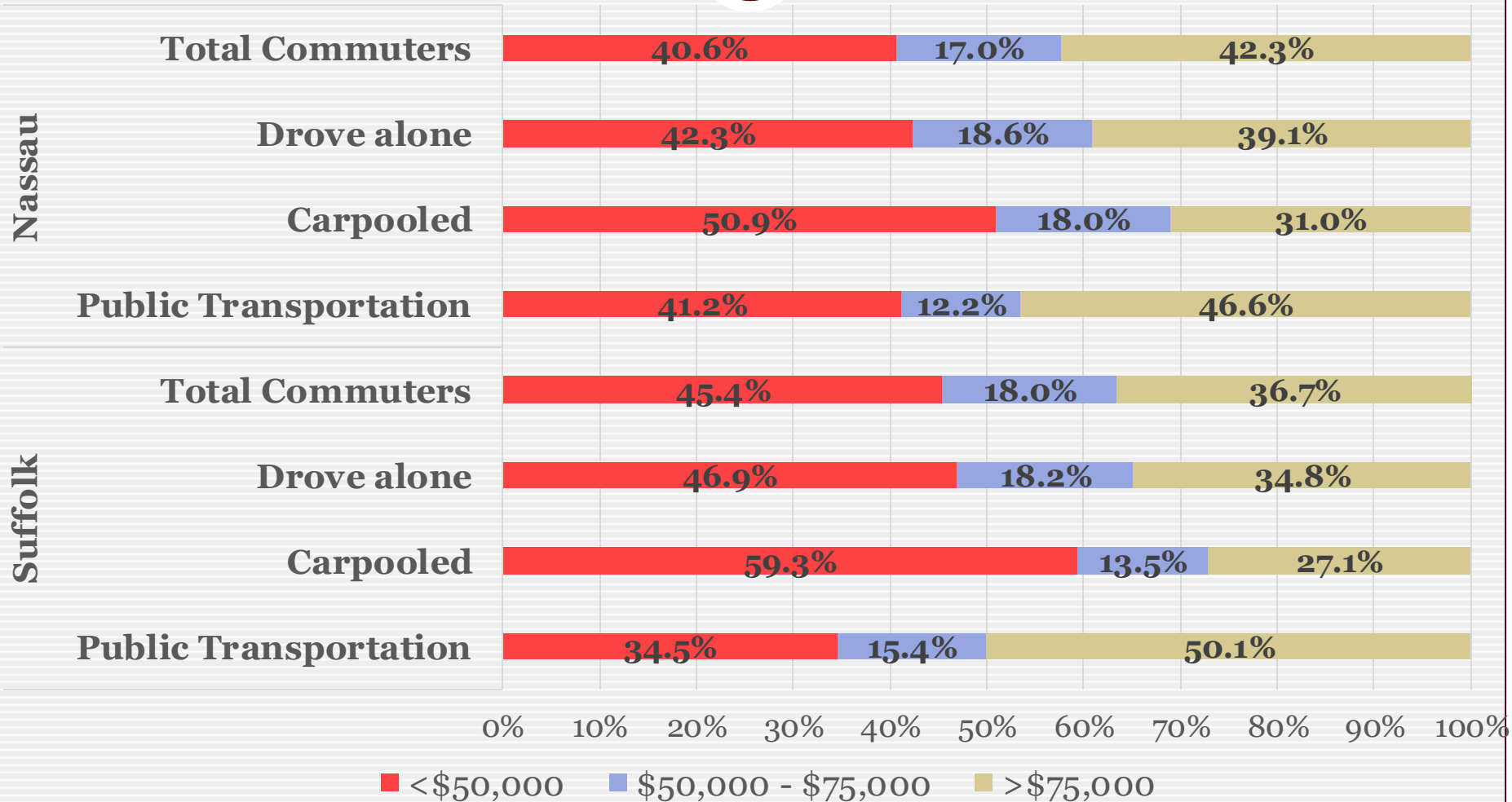
2021



Transportation

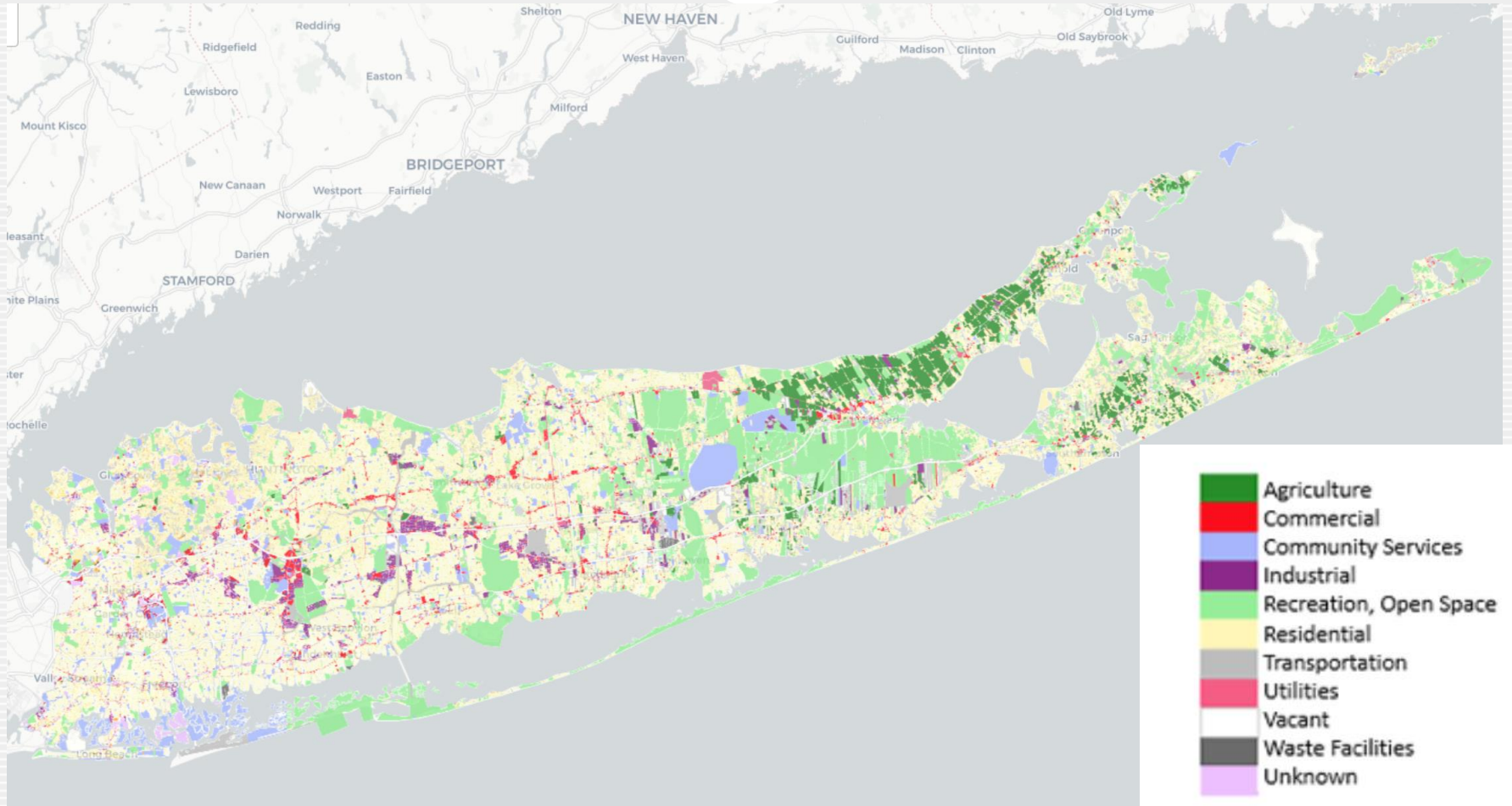
How We Get to Work—by Income

18



Land Use

19



Source: Long Island Index Map

Land Use

20

- 50% Residential
- 20% Recreation/Open Space
- 8% Institutional/Community Service
- 8% Vacant
- 5% Agricultural
- 4% Commercial
- 2% Industrial
- 2% Transportation

Source: Long Island Index Map

Housing Stock

21

- 77.9% - Single-Family Detached
- 21.4% - Attached & Multi-Family
- 00.6% - Mobile homes, boats, etc.

- 83.4% - Owner Occupied
- 16.6% - Renter Occupied

Source: US Census Bureau– ACS 2023

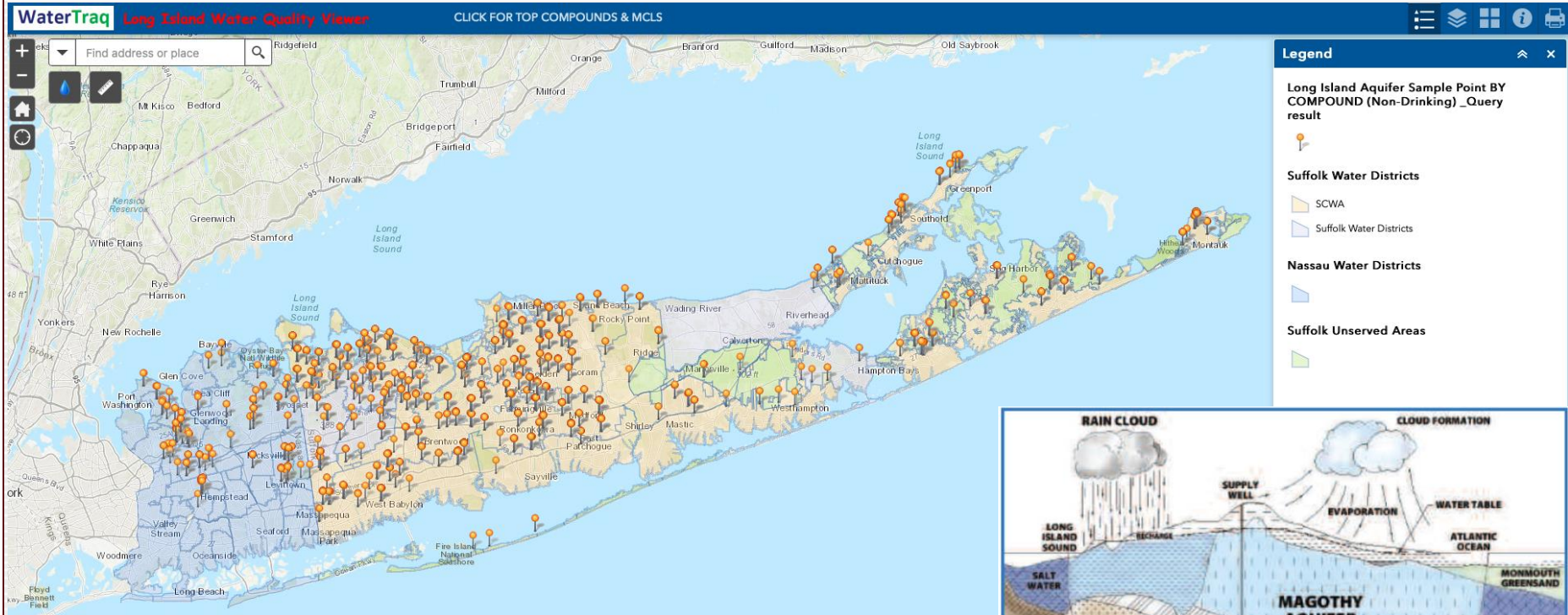
Protecting Groundwater

On Long Island, about **\$2 billion** has been spent by county, state and local governments since 1997 to buy and preserve over 60,000 acres of open space. Most of this money has been spent with the goals of either protecting the quality of Long Island's drinking water or preserving farmland.



Groundwater Concerns

23



Detections of 1,4-Dioxane in untreated groundwater.

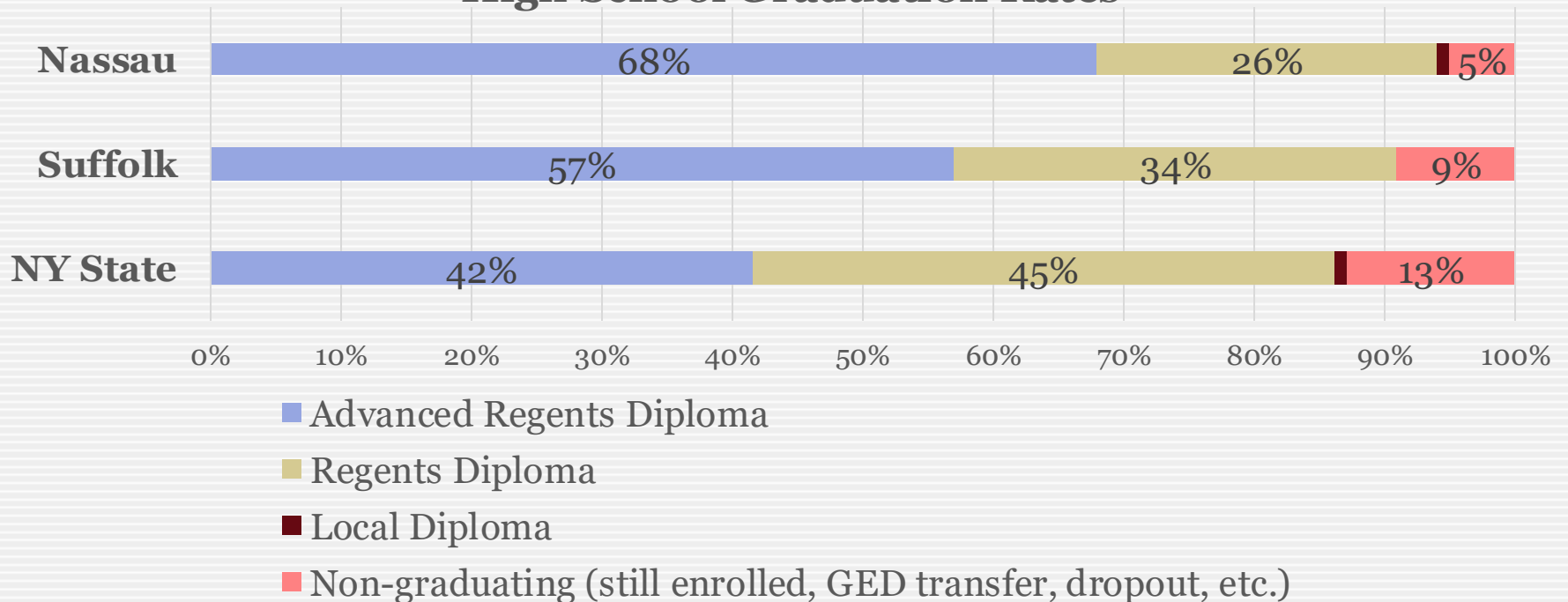
Detection in groundwater does not mean the compound is found in drinking water.

Source: Long Island Commission for Aquifer Protection

Education

24

High School Graduation Rates



Science Talent Search — Every year from 1979 through 2024, at least one Long Island high school student has been a finalist in the oldest and most prestigious science competition in the U.S.

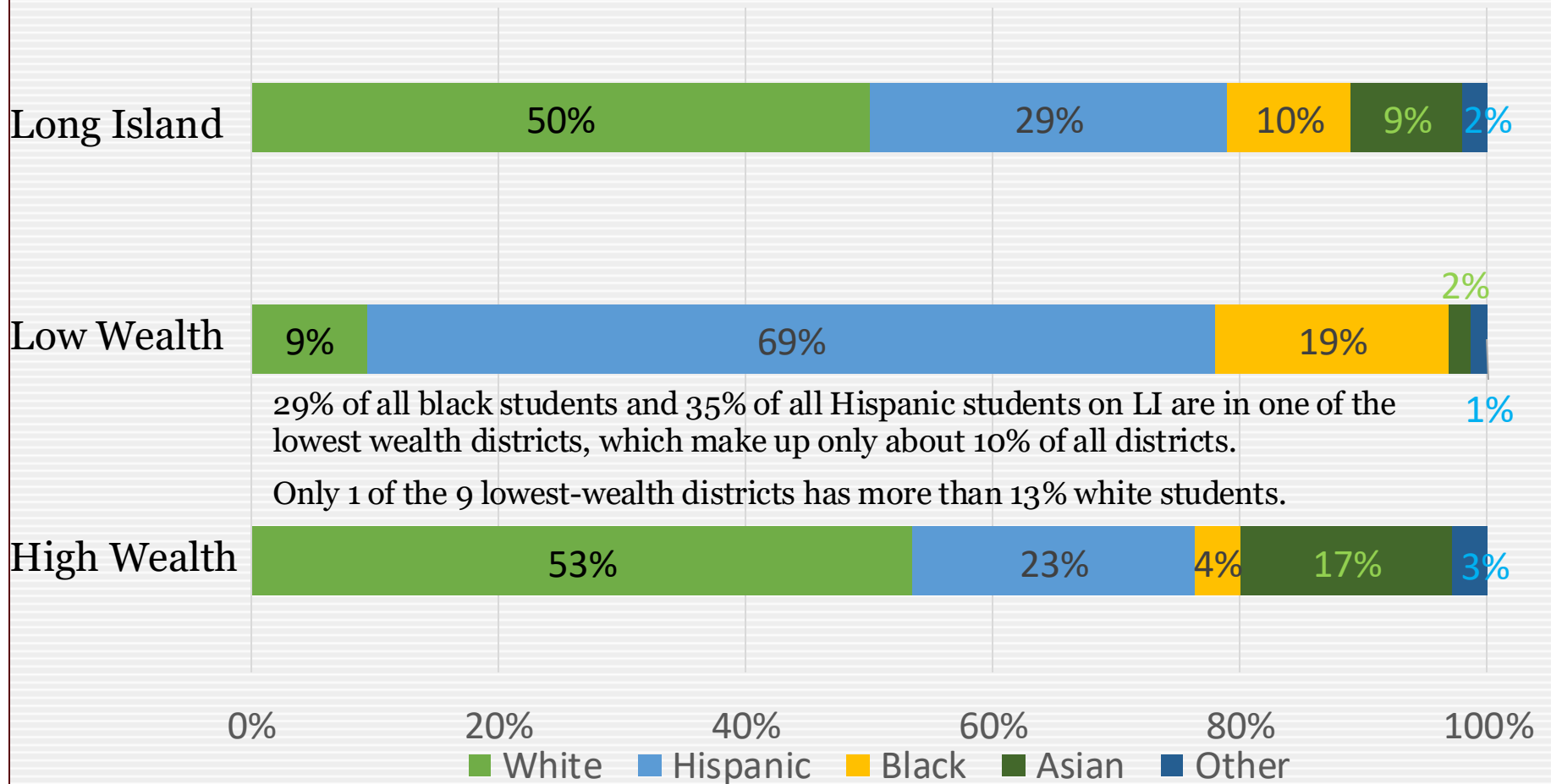
Advanced Placement and International Baccalaureate Exams

25

- The Passage Rate for Long Island Students on Advanced Placement and International Baccalaureate exams in 2022 was 68.6%
- The rate for New York students Statewide was 29.6%, second only to Massachusetts at 30.5%

Segregation in Long Island Schools (2018-2019)

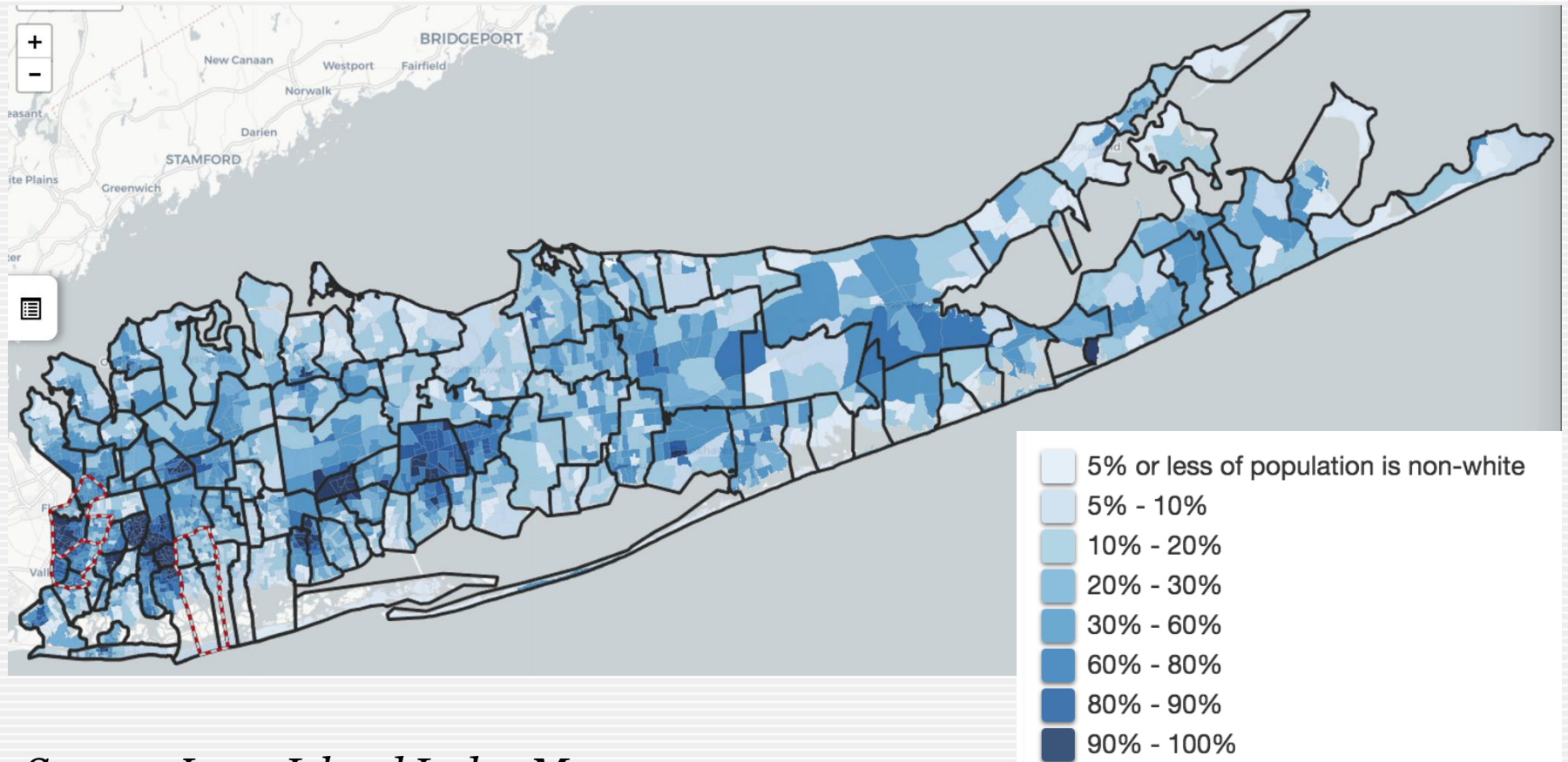
26



Source: LONG ISLAND EDUCATION: COSTS AND OUTCOMES 2018 & NYSED

Segregation of LI School Districts

27



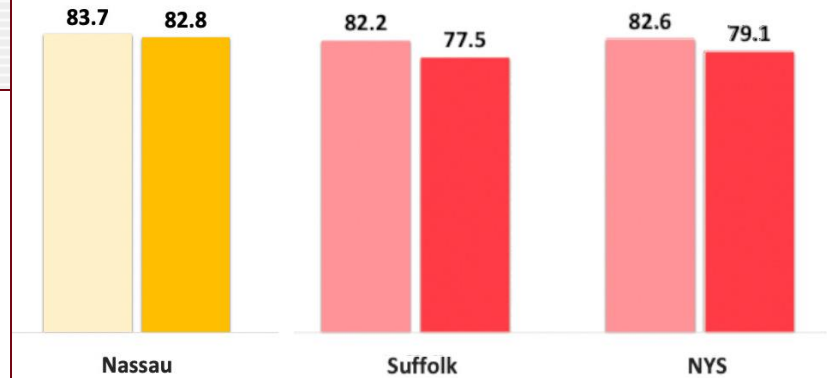
Source: Long Island Index Map

Healthcare



Access to Medical Care

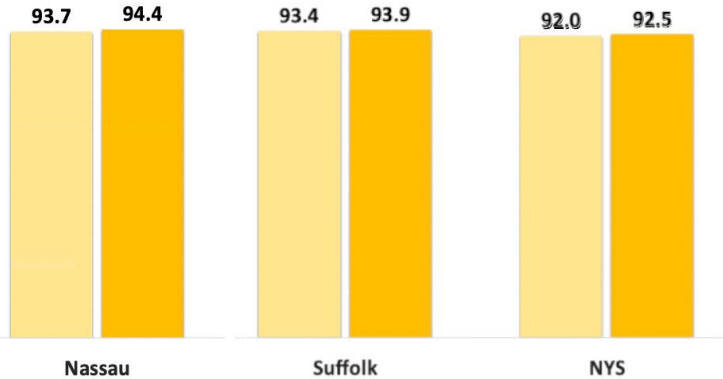
Adults who have a regular health care provider, age-adjusted percentage



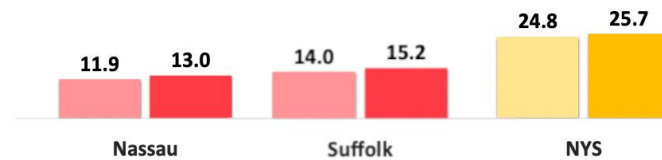
Healthcare Access

Insurance Coverage

Percentage of adults aged 18-64 years with health insurance



Percentage of population with Medicaid/means-tested public coverage



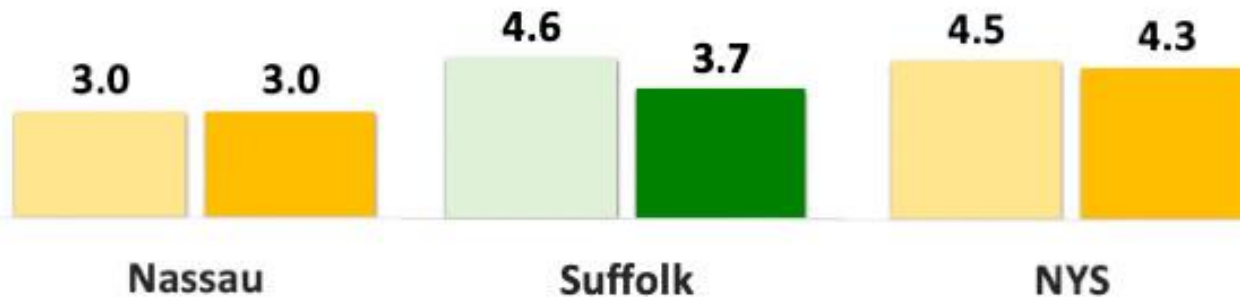
Source: Northwell Health Community Health Needs Assessment 2022-2024

Healthcare

29

Infant Mortality Rate

Mortality rate per 1,000 live births - Infant (<1 year)



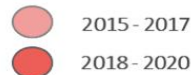
Improving



No Change



Getting Worse



Source: Northwell Health Community Health Needs Assessment 2022-2024

Healthcare

30



Overall County
Health Ranking

4

Quality of Life
Ranking

6

Length of Life
Ranking

3

Prepared by the Office of Strategic Planning at Northwell Health/jc



Overall County
Health Ranking

10

Quality of Life
Ranking

10

Length of Life
Ranking

13

Prepared by the Office of Strategic Planning at Northwell Health/jc

Source: Northwell Health Community Health Needs Assessment 2022-2024

Long Island's Top Employers in 2016

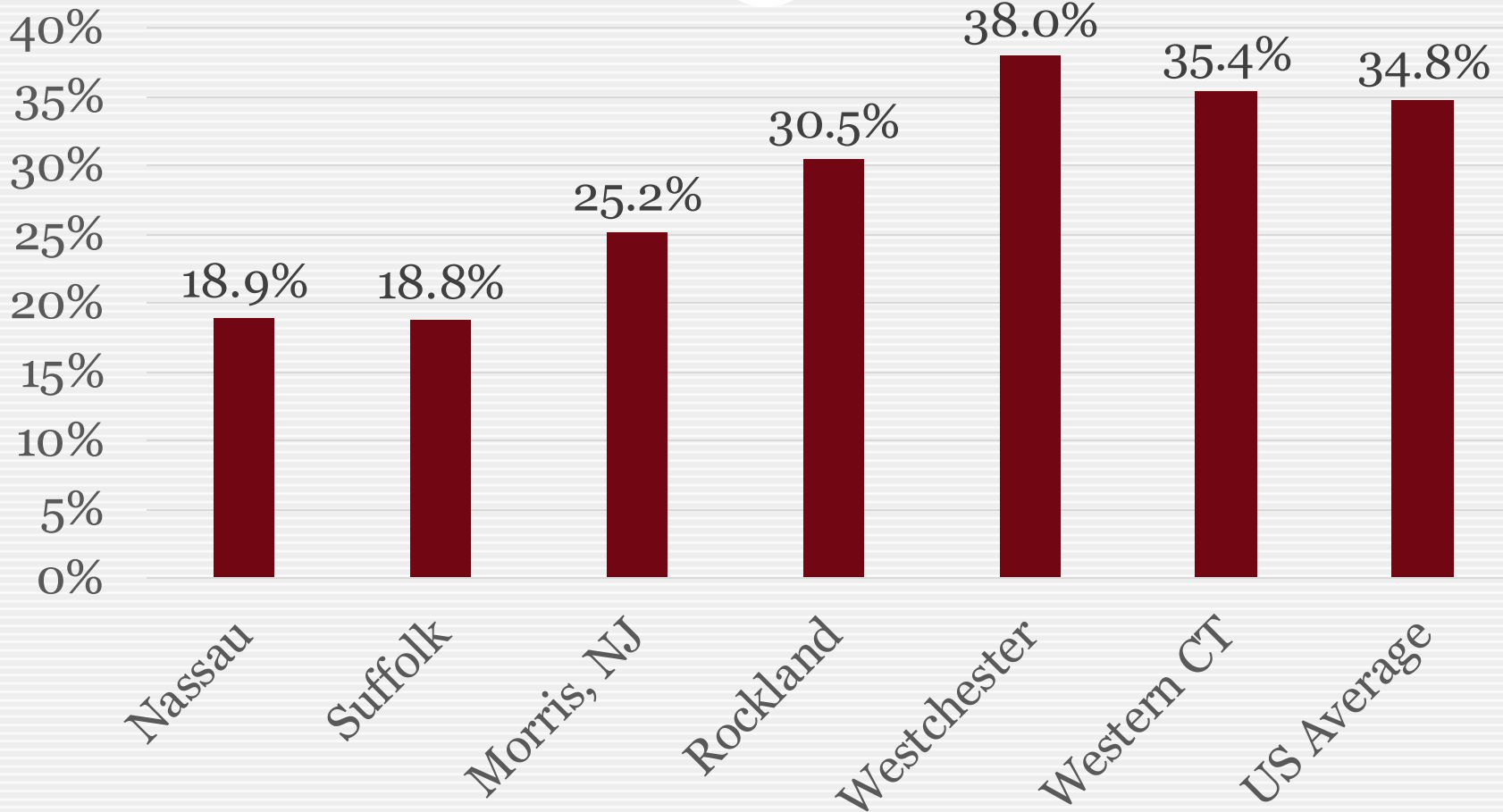
31

- 1. Northwell Health** - 31,153 (includes Queens)
- 2. New York State** - 20,304 (includes SUNY Campuses & Stony Brook Hospital)
- 3. Catholic Health Services** - 17,000
- 4. Nassau County** - 16,784 (includes Nassau University Medical Center, A. Holly Pattern Extended Care Facility and five federally qualified health care centers)
- 5. Federal Government** - 16,391 (includes 9,200 postal workers)
- 6. Suffolk County** - 11,075
- 7. Stop & Shop** - 8,100
- 8. Winthrop-University Hospital** - 7,700
- 9. Long Island Rail Road** - 6,960
- 10. Walmart** - 5,056

Source: Newsday

Share of Rental Units 2023

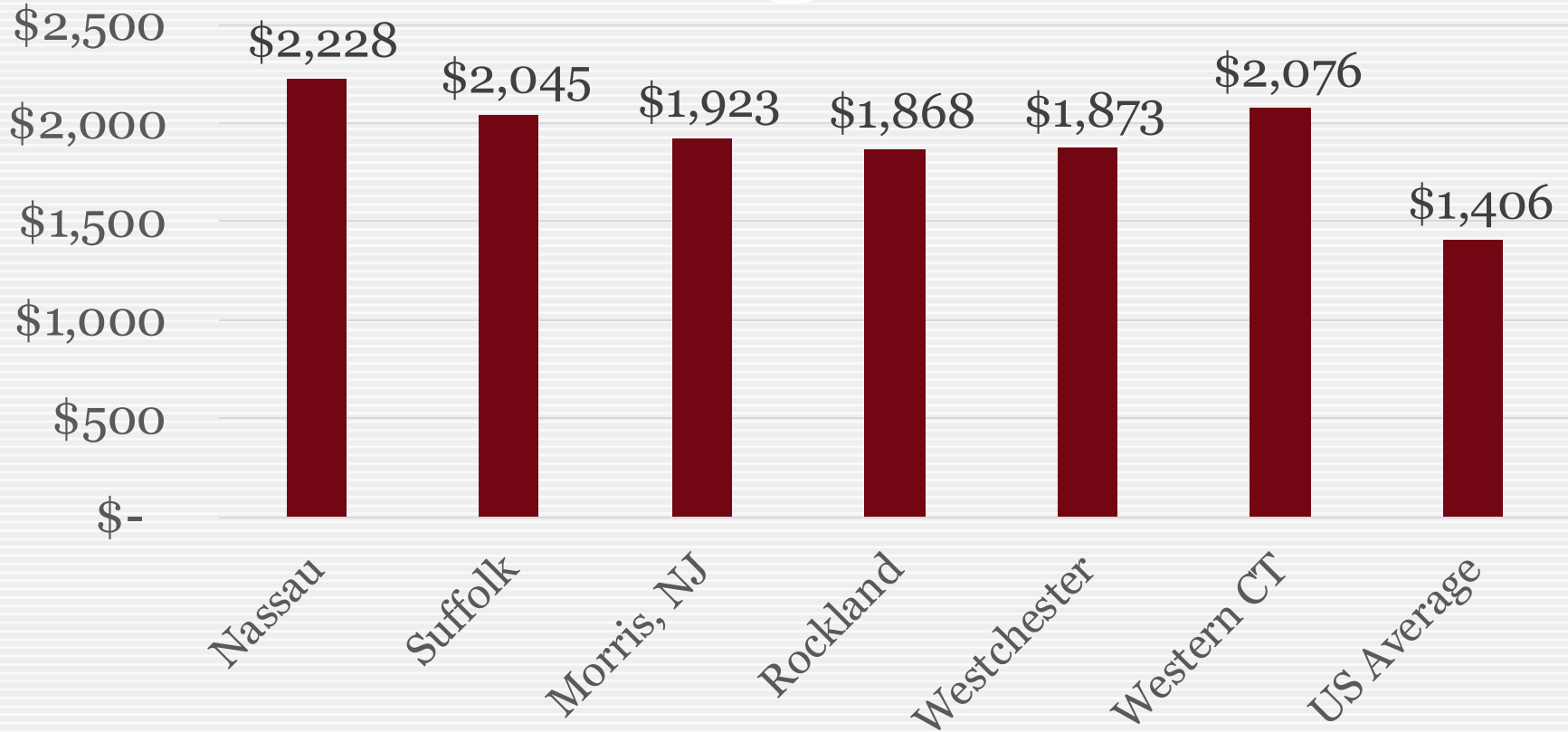
32



Source: US Census Bureau— ACS 2023

Median Gross Rent 2023

33



Median gross rent includes all rental housing units, including studio and one-bedroom apartments. According to HUD, the Fair Market Rent for a two-bedroom apartment on Long Island in 2025 is **\$2,586**.

Source: US Census Bureau— American Community Survey 2023

Housing Cost Burdened on Long Island

34

	Above 30% of Income	Above 50% of income
Nassau		
Owner	37.2%	16.6%
Renter	52.8%	29.0%
Suffolk		
Owner	39.1%	17.5%
Renter	56.1%	31.8%
Long Island	41.4%	19.7%

Source: *Housing Affordability in New York State*, NYS Comptroller, June 2019

Poverty and People Who Are Working Poor

35

United Way ALICE Study

Asset Limited, Income Constrained, Employed

Long Island Household Survival Budget 2018

Households on Long Island Below ALICE Threshold	302,988
Percent of households Below ALICE Threshold	33%
ALICE %	26.5%
Poverty %	6.5%

Family of four (two adults, one infant and one preschooler)

Household Survival Annual Budget:	\$93,252
Household Survival Hourly Wage:	\$46.63

Single adult

Household Survival Annual Budget:	\$26,916
Household Survival Hourly Wage:	\$13.46

Criminal Justice

36

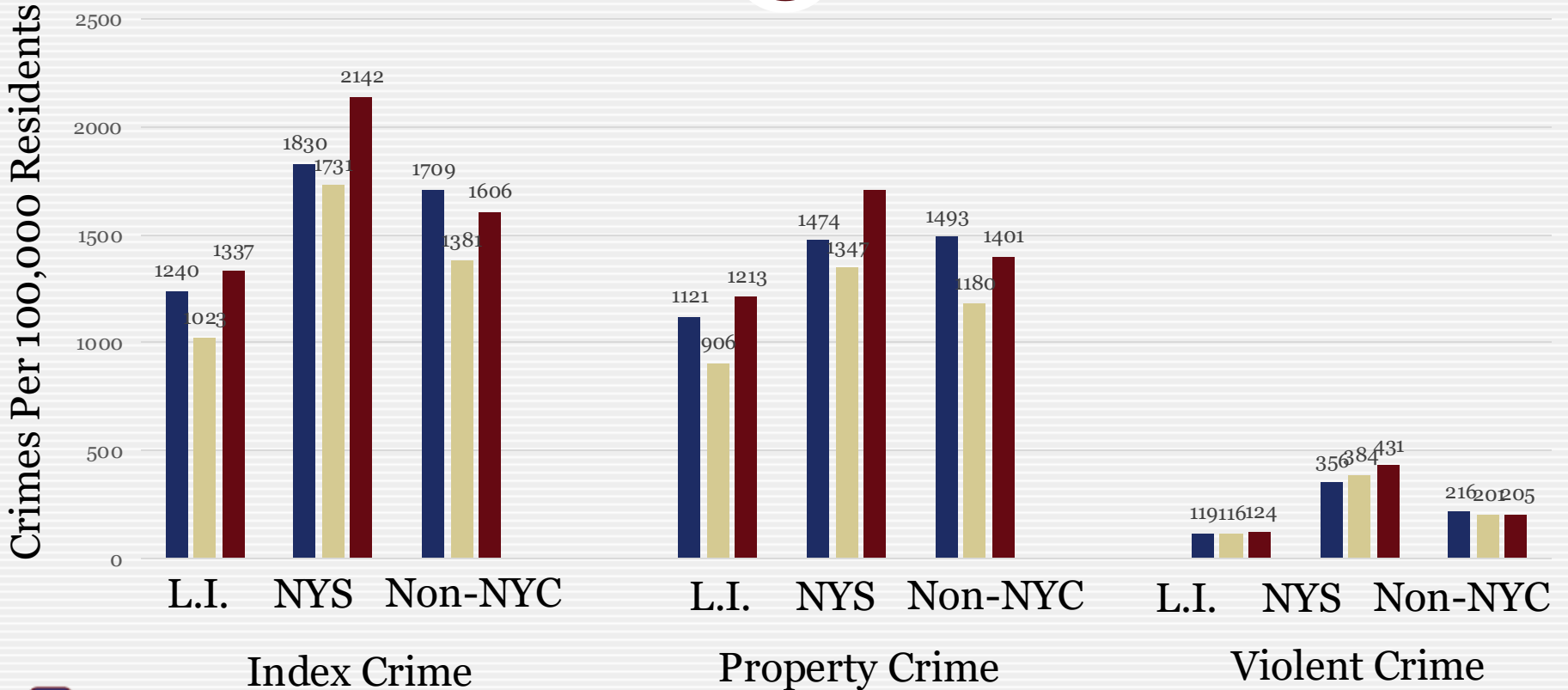
- Including State*, County, Town, and Village agencies, there are approximately **6,500** full-time, sworn law enforcement officers serving Nassau and Suffolk.
- This makes a ratio of **2.25 police per 1,000 residents**. This is somewhat lower than the national average of about 2.8 police per 1,000, and considerably lower than the New York State average of 4.3. (NYS has the highest ratio of any state in the Union.)

* May not include NY State Troopers.

Source: FBI - Criminal Justice Information Services Division

Crime Rates

37



- 2017
- 2021
- 2024

Source: NYS Division of Criminal Justice Services
<https://www.criminaljustice.ny.gov/crimnet/ojsa/countycrimestats.htm>

Newsday Reports Increase in Property Crime from 2021 to 2022

38

SUFFOLK CRIMES

Cases reported to the Suffolk County Police Department

	2021	Jan. 1 to Dec. 3 2022
Murder/manslaughter	32	27
Forcible rape	50	41
Expanded rape	137	105
Robbery	258	229
Aggravated assault	805	776
Total violent crime	1,282	1,178
Burglary (total)	744	831
Burglary (residential)	314	350
Burglary (commercial)	430	481
Larceny (except vehicle)	12,003	14,163
Motor vehicle theft	1,103	1,265
Total property crime	13,850	16,259
ALL CRIME	15,132	17,437

SOURCE: IRS 2022; SUFFOLK COUNTY POLICE DEPARTMENT

NASSAU CRIMES

Cases reported to the Nassau County Police Department

	2021	Jan. 1 to Dec. 31 2022
Murder	10	6
Rape	19	11
Criminal sexual act	10	2
Sexual abuse	11	11
Robbery (other)	197	236
Robbery (commercial)	138	225
Assault felony	441	474
Burglary (residence)	292	455
Burglary (other)	348	422
Stolen vehicles	561	968
Grand larceny	3,201	4,584
ALL CRIME	5,228	7,394
Homicides	18	12

SOURCE: IRS 2022; NASSAU COUNTY POLICE DEPARTMENT

Long Island Media

39

Daily Paper

- Newsday

Weekly Papers

- Dan's Papers - Eastern Long Island
- Farmingdale Observer – Nassau County
- Garden City Life – Nassau County
- Glen Cove Record Pilot – Nassau County
- Great Neck Record – Nassau County
- Hofstra Chronicle – Hempstead
- Levittown Tribune – Nassau County
- Long Island Business News – Long Island
- Long Island Exchange – Long Island
- Long Island Press – Long Island
- Long Islander News – Huntington
- Manhasset Press – Nassau County
- Massapequa Observer – Nassau County
- Mineola American – Nassau County
- Nassau Herald – Cedarhurst, Lawrence, Inwood, Hewlett, Woodmere
- Noticia - Nassau & Suffolk Counties
- New Hyde Park Illustrated News – Nassau County
- The North Shore Leader – Locust Valley, North Shore, Long Island
- Oyster Bay Enterprise-Pilot – Nassau County

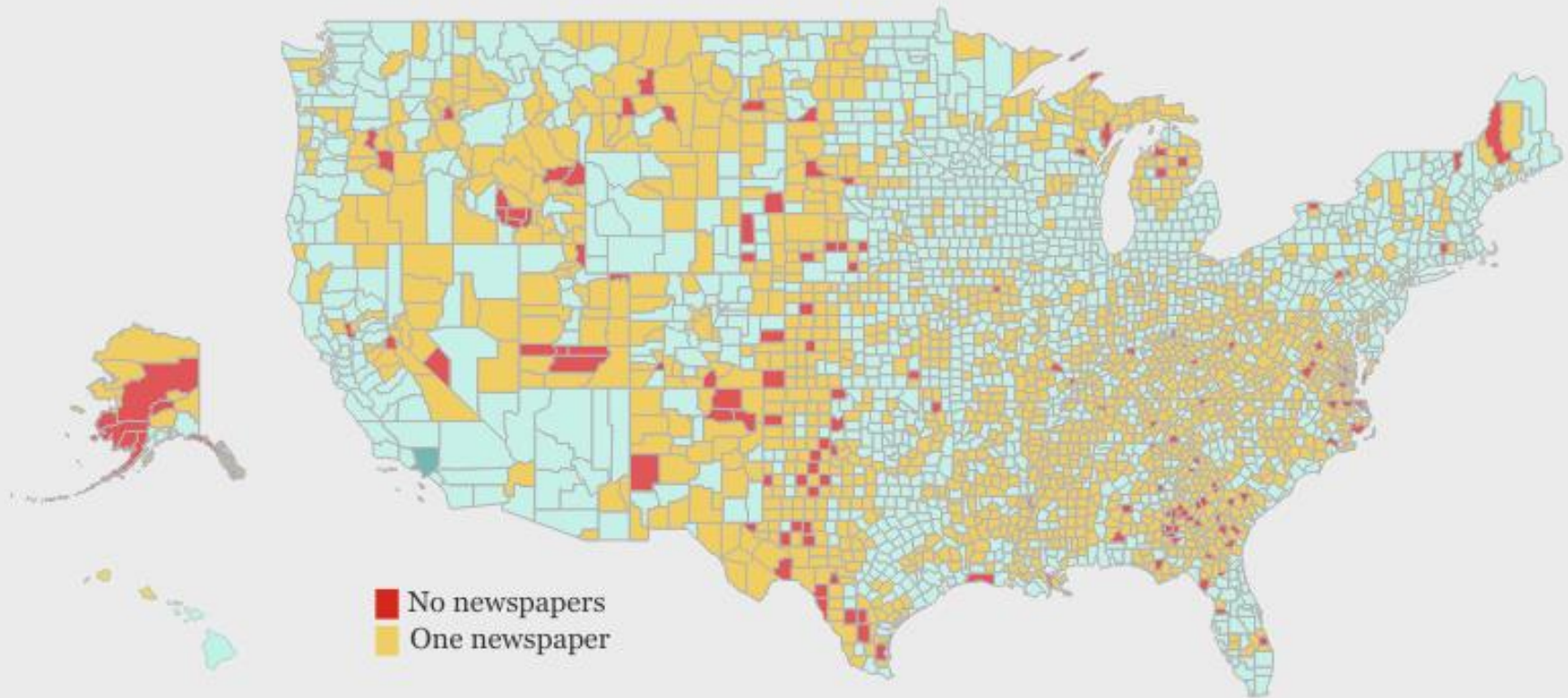
Television

- News12 Long Island
- WLIW Channel 21
- Oyster Bay Guardian
- Plainview-Old Bethpage Herald – Nassau County
- The Port Times Record – Port Jefferson, Belle Terre, Port Jefferson Station and Mount Sinai
- Port Washington News – Nassau County
- The Roslyn News – Nassau County
- The Southampton Press – Southampton
- The Sag Harbor Express – Sag Harbor
- Syosset-Jericho Tribune – Nassau County
- The Times of Huntington-Northport – Northport, East Northport, Fort Salonga - West, Eaton's Neck, Asharoken, Centerport, Smithtown, Nesconset, Hauppauge, St. James, Nissequogue, Head of the Harbor, The Branch, San Remo, Kings Park, Fort Salonga - East, and Commack
- The Times of Middle Country – Selden, Centereach and Lake Grove
- The Times of Smithtown – Smithtown, Nesconset, Hauppauge, St. James, Nissequogue, Head of the Harbor, The Branch, San Remo, Kings Park, Fort Salonga - East, and Commack
- The Village Beacon Record – Miller Place, Sound Beach, Rocky Point, Shoreham and Wading River
- The Village Times Herald – Setauket, East Setauket, Stony Brook, Old Field, South Setauket, Poquott and Strong's Neck
- The Westbury Times – Nassau County

Many US Counties Are News Deserts

40

In the U.S. 200 counties do not have a local newspaper. Half of all counties - 1,540 - have only one newspaper, usually a weekly.



Source: UNC Hussman School of Journalism and Media

Energy

41

- In 2021, PSEG LI's electric rates were 12% above NY State average and 93% above U.S. average.¹
- Heating fuel costs also tend to be higher than the national average.
- About **59%** of Long Island homes use **oil for heating**, compared to less than 9% nationwide and 33% in NYS.² Home heating oil is more expensive and more polluting than alternatives.

1. Source: U.S. Energy Information Administration

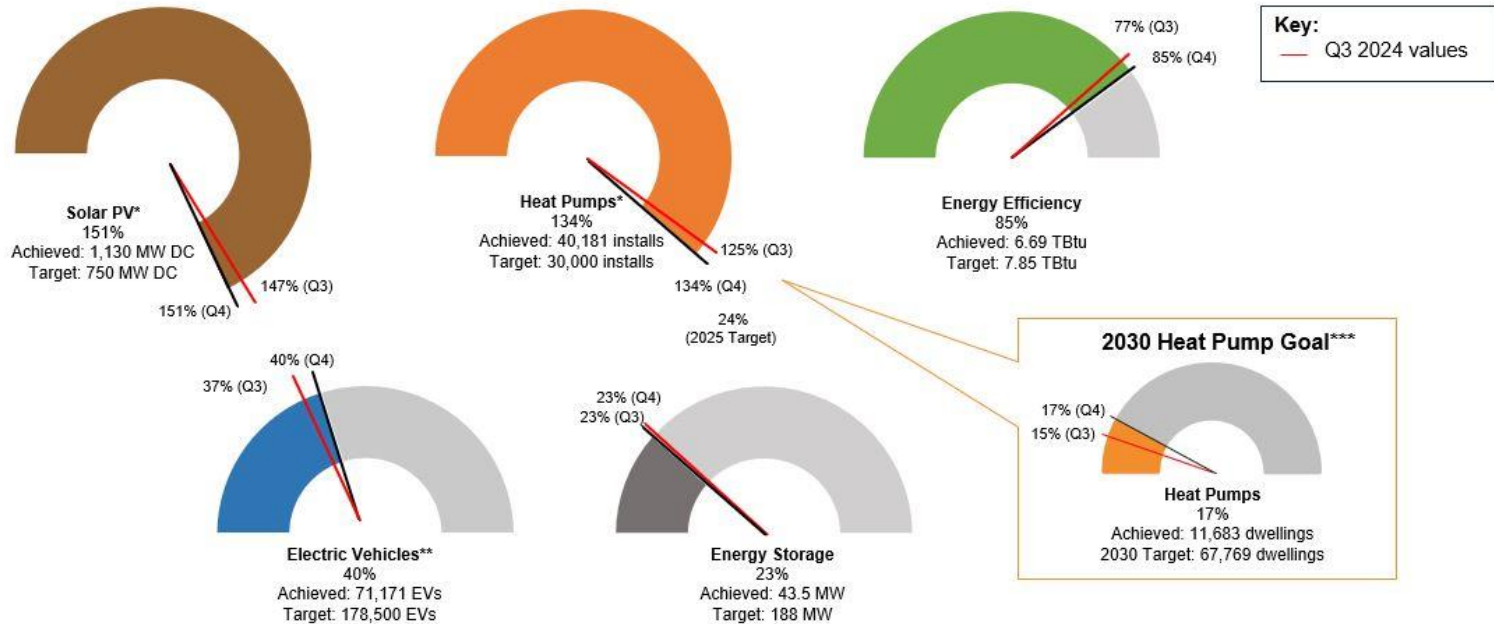
2. Source: U.S. Census

Contributing To 2025 NYS Clean Energy Goals



Contributing To 2025 New York State Clean Energy Goals

PSEG Long Island contributes to New York State Clean Energy Goals defined by the State's climate laws and policies. Utility 2.0 initiatives that are underway and planned will directly contribute to the achievement of goals in areas such as energy efficiency, energy storage, beneficial electrification (heating and transport), and renewable energy. The below charts reflect PSEG Long Island's progress towards its share of statewide goals for 2025.



Current as of: December 2024 (Solar PV, Heat Pumps, Energy Efficiency and Electric Vehicles) and November 2024 (Energy Storage), based on data availability.
 * The 2025 Goals for Solar PV and Heat Pumps have been accomplished.
 ** The EV CLCPA Goal achievement has been adjusted to account for ALL EVs on the road on Long Island rather than EVs on the road associated with PSEG Long Island.
 *** The 2030 Heat Pump CLCPA Goal is reflected in the callout box because New York state has emphasized focus on the 2030 target on dwellings, which is a shift from the historical focus on heat pump installations.



Q4 - 2024

Resiliency

43

LONG ISLAND'S TOP STORMS

Hurricane Gloria (1985)

78% Customers Affected

Damage Locations: 18,700

Restoration Time: 12 Days

Hurricane Irene (2011)

47% Customers Affected

Damage Locations: 19,900

Restoration Time: 9 Days

Superstorm Sandy and Nor'easter (2012)

90% Customers Affected

Damage Locations: 37,000

Restoration Time: 17 Days
(two storms)

Tropical Storm Isaias (2020)

50% Customers Affected

Damage Locations: 23,000

Restoration Time: 8 Days



Other Notable LI Storms

- 1938 – Long Island Express/Great New England Hurricane – Worst recorded storm to hit L.I. in modern history. Category 3 when it hit LI. Killed 60 on the East End, hundreds more in New England
- 1945 – Hurricane Carol – Category 2. 275,000 Nassau-Suffolk homes lost LILCO service.
- 1960 – Hurricane Donna – required evacuation of 4,000 to 5,000 people from the barrier beaches and of several hundred additional families from low-lying areas between Amityville and Babylon.
- 1978 – Blizzard of '78 – 2+ feet of snow and winds up to 80 MPH. 15-foot drifts reported. 11 houses collapsed. 3,000 cars were abandoned across Long Island and 2,000 people had to be put up in rescue centers
- 1992 – Nor'easter - two-day nor'easter brought record high tides and hurricane-force winds across the Island, that turned to an unpredictably heavy wet snowfall that compounded flooding problems and hindered clean-up efforts.

Engaging Your Local Community

45

Have you ever attended any of these meetings?

- ◆ Town Board, Village Board of Trustees
- ◆ County Legislature
- ◆ Town or village Zoning Board of Appeals
- ◆ Planning board
- ◆ County Planning Commission
- ◆ Long Island Regional Planning Council
- ◆ School Board
- ✧ Local Civic Group
- ✧ Local Chamber of Commerce
- ✧ PTA