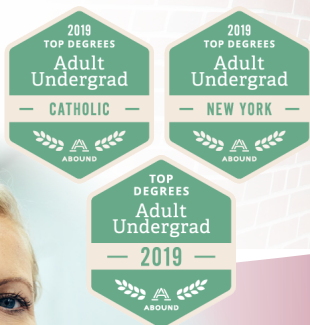


NOT SURE IF THIS IS THE RIGHT FIT FOR YOU? ASK YOURSELF THESE QUESTIONS:

- Do you have an associate's degree from Molloy or another college or university in a health-related field?
- Are you a self-motivated student who is interested in taking courses in online formats?
- Do you want to shorten your time to degree completion with prior learning credits and accelerated summer semesters?
- Would a Bachelor's degree help you get to the next level in your career?



PRIOR LEARNING CREDIT

At Molloy we recognize learning occurs before a student enrolls at the University. It may be credit-bearing courses taken at another university (transfer credit) or academic credit awarded for learning accomplished outside of the traditional classroom. You may significantly cut the time to complete your degree by earning Prior Learning Credit through:

Standardized proficiency exams
(CLEP, DSST and UExcel)

Non-collegiate course evaluations
(ACE, National CCRS)

Molloy challenge examinations
(based on academic department)

Military Experience

Life experience portfolio evaluations

MAKING COMPLETION MORE AFFORDABLE

Program is significantly discounted*
Cannot be combined with any Molloy partnership discount or institutional aid. All classes must be taken online.

For more information about this program, call 516.323.4411 or email enrollonline@molloy.edu

COURSE SEQUENCING

Our faculty are committed to providing a program that combines vocational and liberal education. It is this education that promotes you as a compassionate, highly qualified, professional in the high-tech areas of Allied Health. Study will focus on completing 21 credits in Health Service Leadership.

- HSL 3000 – Overview of Health Care
- HSL 3020 – Healthcare Information Management
- HSL 3060 – Health Services Organizations and Leadership
- HSL 4040 – Financial Management in Healthcare Organizations
- HSL 4100 – Legal Issues in Health Service Leadership
- HSL 4120 – Research for the Health Professional
- HSL 4900 – Seminar in Health Service Leadership

Total (HSL): 21 credits

Theology: 3 credits

MAT 1150, CIS 1050, ETH 2880: 9 credits

Health Professions Major transfer credits: 30 credits

Liberal Arts/Sciences and Electives: 60 credits

Total Credits Required to Earn a B.S. degree: 120

